

## OPERATION

### How to Operate your Product

The P900-GX is an automatic unit: once it's installed and plugged in, simply press the power switch to turn it ON and enjoy clean air in your home!

⚠ **CAUTION:** The suggested operating temperature range is 10 to 50°C (50 to 122°F). Operating the P900-GX outside this range will result in decreased performance. For optimal performance, air temperature moving through the unit should be in the range of 15 to 20°C (60 to 70°F).

### How to Read the Control Panel Display

The P900-GX control panel display will give you real time status update about its fan speed and timer settings.



### Default Settings

When the unit is plugged, all settings are OFF: push the power button to turn on unit.

Default fan speed is set to 3, which is considered the optimum performance.

Default run time is set to "C" (continuous operation).

The fan is always running when the lamp is on.

⚠ **CAUTION:** System is designed to control the TDCEF-05019A12-H-12-BAL 12 Volt brushless DC fan motor. Operation with other types of fan may not be optimal and may void the warranty.

You can then select the P900-GX fan speed and operating time at any time to suit your individual preferences.

During operation, the LEDs and display toggle every 5 seconds between TIME and FAN setting display, showing time remaining and fan speed.

Operation will resume at default time/speed whenever unit is turned off and on again.

### How to Switch from Default to Timer Mode

1. While the P900-GX is powered ON, press the "Mode Button" to switch between settings. When "Timer Mode LED Indicator" flashes, your unit is on "Timer Mode" settings and the numeric digit on the "LED Display Window" corresponds to the time left before shutting down.
2. Use the up and down arrow buttons to select run time.  
Run time can be set between 1 to 9 hours or to "C" (Continuous operation).
3. Wait for a short period without touching any buttons for P900-GX to register new settings. Your unit will then start working with the timer mode activated.

After the set time has elapsed, lamp, fan and display will turn off.

## How to Adjust Fan Speed

1. While the P900-GX is powered ON, press the “Mode Button” to switch between settings. When “Fan Speed LED Indicator” flashes, numeric digits on the “LED Display Window” corresponds to the unit fan speed.
2. Use the up and down arrow buttons to select fan speed.  
Variable fan speeds can be set between 1 to 9 (low-high).

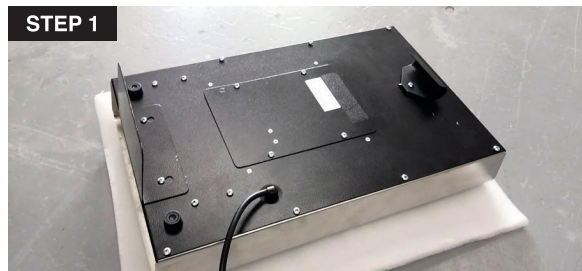
## MAINTENANCE

### How to Replace Lamp(s)

Replacing lamp on the P900-GX is quick and easy. Simply turn off the power source, remove and dispose of old lamp, replace with new Sanuvox branded UV lamp, turn power source back on. See below for detailed step by step instructions.

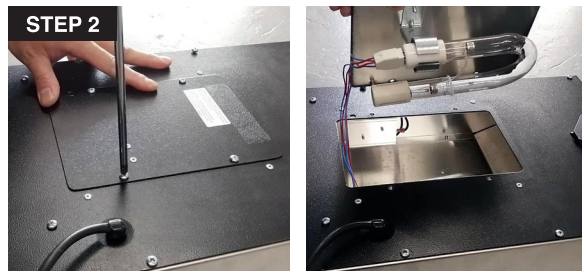
⚠ **CAUTION:** In order to avoid reduced performance of lamp(s), do not touch lamp glass without gloves.

### Step by Step Lamp Replacement



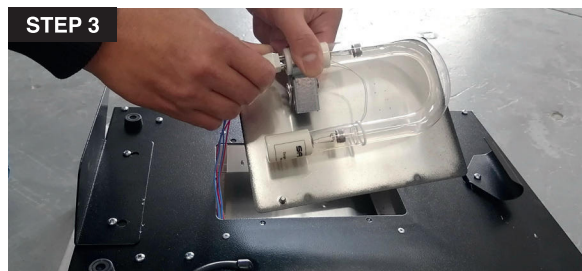
1. Unplug P900-GX from wall outlet.  
Turn face down and place on soft surface to protect top of unit.

⚠ **CAUTION:** Before installing or performing maintenance on the unit or system, **TURN OFF AND DISCONNECT the unit or system from all power sources.**



2. Remove the 4 screws from the lamp access door. Then remove lamp access door.

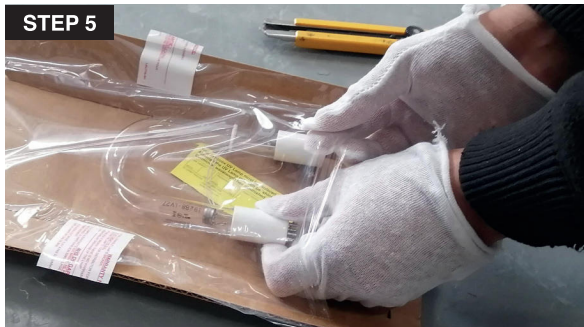
**NOTE:** There is a micro switch / cut-off switch to cut power to the P900-GX when the lamp access door is removed.



3. Once the lamp access door is removed hold the old lamp by the ceramic socket and remove the white plug from the old lamp.



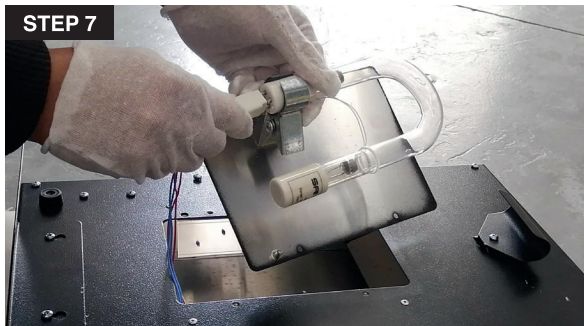
4. Press the lamp clamp to release the old lamp, and slowly remove the old lamp.



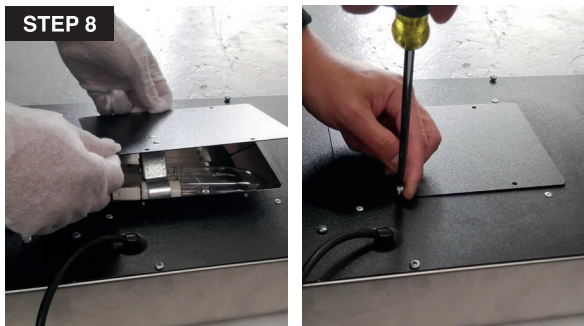
5. **Prepare the UV lamp for installation.** Remove lamp from packaging. Only after you have visually inspected the UV lamp should you break the security seal on the underside of the cardboard sleeve.



6. Press the lamp clamp and insert the new lamp. Release lamp clamp to secure lamp in place.



7. Holding the ceramic base, attach the plug to the new lamp. The plug will fit in one direction only. It may be necessary to rotate the plug 90° to attach it.



8. Replace the lamp access door and secure it with its 4 screws.



9. Replace the P900-GX upright or on wall and plug the purifier in a wall outlet.

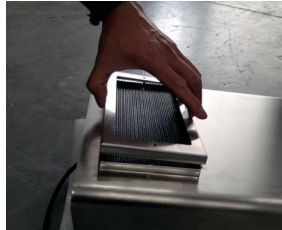


## How to Clean your Product

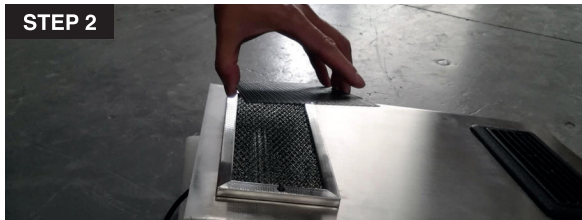
For optimal performance, the lamp(s) and filter(s) should be kept free of dust and residue deposit. Clean when necessary with mild soap or alcohol. To clean the unit exterior, use a damp cloth with general purpose detergent. Always spot test the cleaner to make sure it does not damage the surface.

⚠ **CAUTION:** Under no circumstance should water be sprayed or splashed onto the product.

### Step by Step Inlet Filter Cleaning



1. Detach the two thumbscrews on the top of the filter frame with a **non-magnetic 5/16" nutdriver**. Then, remove the filter frame.

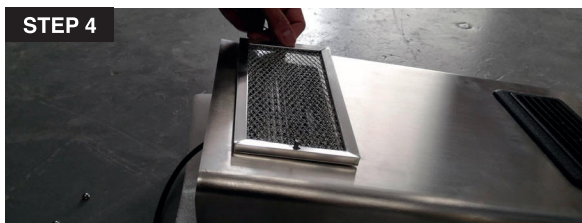


2. Remove the plastic inlet grill.

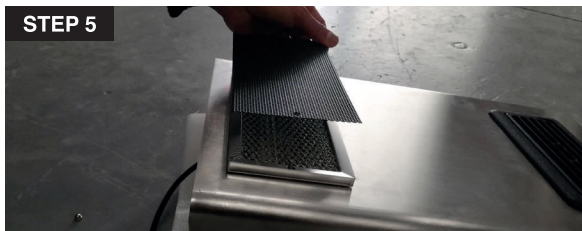


3. Remove the aluminum filter and clean it.

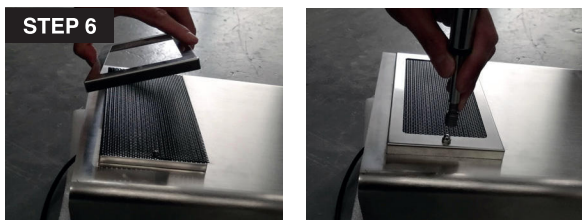
**NOTE:** The filter can be washed in a mild detergent, soap and water.



4. When filter is dry, reinstall it on the inlet posts.



5. Replace the plastic grill.



6. Replace the filter frame. Reattach the thumbscrews: place them with your finger and tighten them with the nutdriver.

## STORAGE

The P900-GX does not require specific storage. It is a portable unit that works continuously when ON, or automatically when selecting proper settings (fan speed and timer).

**⚠ CAUTION:** Keep away from unsupervised children. This unit is not a toy.

## ULTRAVIOLETS: UVV & UVC

The UVC (254 nm) and UVV (185 nm) light produced by Sanuvox UV units and systems are the same two UV wavelengths produced by the Sun. The UVC wavelength attacks the micro-organisms on a molecular level deactivating and destroying the contaminants, while the UVV wavelength degrades the chemicals and odors. Unlike conventional UV lamps on the market, Sanuvox UV units and systems use a patented process designed to deliver the maximum UV dosage to the moving air-stream or surface.

**⚠ CAUTION:** Never expose eyes or skin to ultraviolet light from any source.

## ELECTRICAL RATINGS, POWER CONSUMPTION & AVAILABLE VOLTAGE

The product is rated at 120V to 240V, and 50 Hz to 60 Hz.  
See product label to confirm power consumption of your specific unit or system.

**NOTE: IF YOU EXPERIENCE A PROBLEM, PLEASE CONTACT CUSTOMER SERVICE FIRST OR SEE YOUR WARRANTY. DO NOT RETURN THE PRODUCT TO THE ORIGINAL PLACE OF PURCHASE. DO NOT ATTEMPT TO OPEN THE PRODUCT OR TAMPER WITH ITS COMPONENTS WITHOUT CONTACTING CUSTOMER SERVICE FIRST. DOING SO MAY VOID YOUR WARRANTY AND CAUSE PERSONAL INJURY OR DAMAGE TO THE PRODUCT.**

## TROUBLESHOOTING

If your product is not working properly, refer to the following.

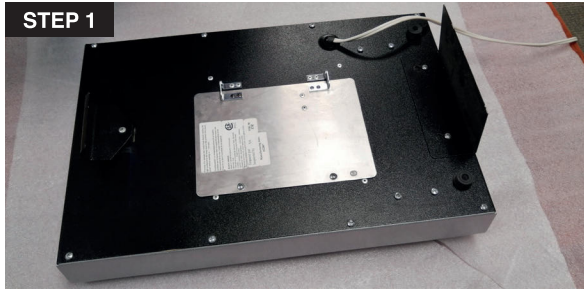
### What you will need

A Phillips No. 2 screwdriver, a non-magnetic 5/16" nutdriver and spare parts.

Problem	Possible Cause	Solution
<b>Unit doesn't come ON.</b>	- There is no power to the electrical outlet.	- Make sure the power outlet is working. - Make sure the unit is plugged in to 120V outlet.
	- The On/Off switch is not ON.	- Push the ON button on the display.
	- The power cord is damaged.	- Replace power cord.
	- The micro switch / cut-off switch is not well engaged.	- Make sure the lamp door is well closed. - Make sure the lamp door pin pushes on the micro switch / cut-off switch.
<b>Unit comes ON, but lamp is OFF: its "glow" isn't visible through the outlet louver.</b>	- Lamp and/or ballast are defective.	- Get a genuine replacement lamp and/or ballast. - Replace lamp and/or ballast.
<b>Unit comes ON and lamp is ON, but the motor is not turning or is making rattling noise.</b>	- Motor is defective.	- Replace motor.
	- Motor wire connection is not properly connected.	- Check motor wire connection. <b>See Verification of Motor Wire Connection instructions on page 11 (A).</b>

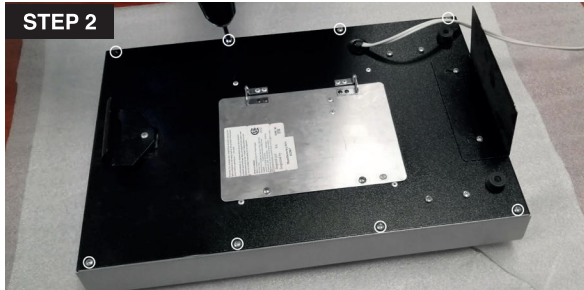
**Contact your contractor for all your needs in terms of replacement parts: power cord, control panel display, UV lamp, ballast, filter, grill, fan motor, stand, handle, etc.**

## A. Step by Step Verification of Motor Wire Connection

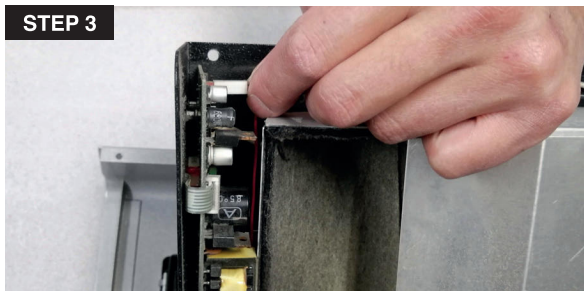


1. Unplug P900-GX from wall outlet.  
Turn face down and place on soft surface to protect top of unit.

⚠ **CAUTION:** Before installing or performing maintenance on the unit or system, **TURN OFF AND DISCONNECT the unit or system from all power sources.**



2. **On the back of the P900-GX, unscrew the 8 screws along the sides (4 on the left, and 4 on the right) to open the unit.**



3. Once unscrewed, lift the cover to open the unit.  
Look at the top to see **if the motor connection is properly connected.**

**WARRANTY**

You should first read all instructions before attempting to use this product.  
For this warranty to be valid, keep a copy of the proof of purchase.

UV lamp	3 years
Ballast	3 years
Electronic components	3 years



- A. This limited warranty applies to repair or replacement of product found to be defective in material or workmanship. This warranty does not apply to damage resulting from abusive, unreasonable use or supplemental damage. Defects that are the result of normal wear and tear will not be considered manufacturing defects under this warranty.  
**SANUVOX IS NOT LIABLE FOR INCIDENTAL OR CONSEQUENTIAL DAMAGES OF ANY NATURE, ANY IMPLIED WARRANTY OF MERCHANTABILITY OR FITNESS FOR A PARTICULAR PURPOSE ON THIS PRODUCT IS LIMITED IN DURATION TO THE DURATION OF THIS WARRANTY.**  
Some jurisdictions **do not** allow the exclusion or limitation of incidental or consequential damages or limitation on how long an implied warranty last, so the above limitations or exclusions may not apply to you. This warranty gives specific legal rights, and you also may have other rights which vary from jurisdiction to jurisdiction. This warranty applies only to the original purchaser of this product from the original date of purchase.
- B. At its option, SANUVOX will repair or replace this product if it is found to be defective in material or workmanship.
- C. This warranty does not cover damage resulting from any unauthorized attempts to repair or from any use not in accordance with the instruction manual.
- D. This warranty does not cover the filters, pre-filters or other accessories (if included), except for material or workmanship defects.

Call us toll-free at 1-888-726-8869 or email: [info@sanuvoy.com](mailto:info@sanuvoy.com)

**Please be sure to specify product name.**

**NOTE: IF YOU EXPERIENCE A PROBLEM, PLEASE CONTACT CUSTOMER SERVICE FIRST OR SEE YOUR WARRANTY. DO NOT RETURN THE PRODUCT TO THE ORIGINAL PLACE OF PURCHASE. DO NOT ATTEMPT TO OPEN THE PRODUCT OR TAMPER WITH ITS COMPONENTS WITHOUT CONTACTING CUSTOMER SERVICE FIRST. DOING SO MAY VOID YOUR WARRANTY AND CAUSE PERSONAL INJURY OR DAMAGE TO THE PRODUCT.**

**CUSTOMER SERVICE****TO ORDER REPLACEMENT PARTS**

PLEASE CONTACT YOUR CONTRACTOR OR SANUVOX CUSTOMER SERVICE

Toll-Free Phone #: 1-888-726-8869

Email: [info@sanuvoy.com](mailto:info@sanuvoy.com)

Website: [www.sanuvoy.com](http://www.sanuvoy.com)

**Please be sure to specify product name.**

**Replacement parts for this product**

<b>BST120/240GL</b>	Ballast with input of 120 to 230V
<b>LMPRGXJ65</b>	T6 dual zone 6.5" UV 'J' lamp
<b>MSCFTR7</b>	Metal inlet filter
<b>MSCFTR8</b>	Inlet grill
<b>MSCMTR8</b>	Motor assembly

**⚠ WARNING: Use only specified SANUVOX branded replacement UV lamps with your unit or system. Use of any other lamps will void your warranty and can result in damage to the unit, system and/or lamp(s).**